

Update from Intersect Systems

Software Systems for Records Management

Grand Prairie, Texas

June 2006

Records Retention • Document Imaging • Records Management • Workflow Extensions

Enterprise-Scale Records Management: RCAMS for Microsoft® SQL Server™

Intersect Systems' RCAMS records control and management system is available for the Microsoft SQL Server database. A recent development in response to interest from several large installations running Intersect's standard RCAMS, the RCAMS SQL option is licensed separately. Current users of the standard RCAMS with paid-up participation in the Annual Support Program can upgrade to the SQL Server version for the difference in their current paid-up license and the RCAMS SQL license. Interested persons should contact Intersect for pricing and upgrade information.

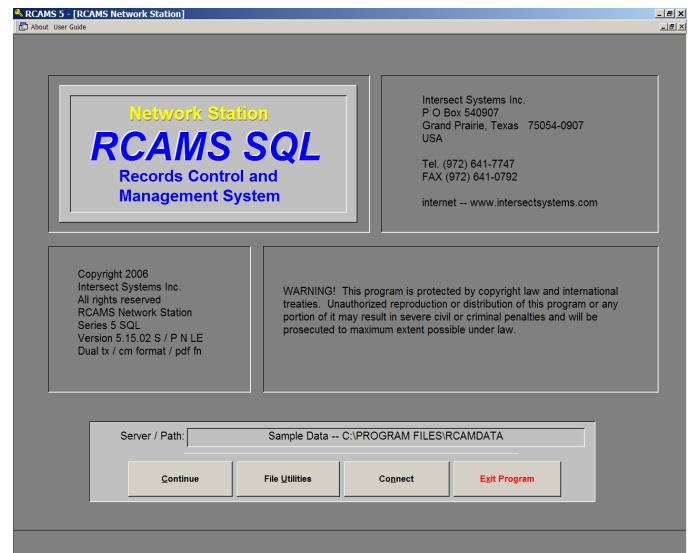
RCAMS SQL includes the same comprehensive records management tools as standard RCAMS, including: **Retention Schedule Manager**, for developing and maintaining a records control schedule; the **RCAMS** application, a comprehensive records management system refined over fourteen years of continuous development; the **Accession** workflow extensions; and the comprehensive **Intersect Image Management** system for indexing and management of electronic images within the RSM / RCAMS SQL system.

The standard database engine that Intersect provides with RCAMS is very stable and has proven to be a dependable and trouble-free data system. However, several larger users have expressed an interest in SQL Server, leading to the RCAMS SQL option for Intersect's RCAMS records management system.

Some features of RCAMS / SQL Server:

- SQL Server can support several thousand simultaneous users.
- SQL Server can handle very large databases, with sizes measured in terabytes.
- SQL Server supports scheduled backups in real time as well as device mirroring with automatic fail-over options for full redundancy.
- SQL Server supports transaction logging, maintaining a complete record of all transactions in the transaction log. In the event of a crash or a serious error, SQL Server can replay and recreate transactions up to the point of failure.
- SQL Server offers security that includes strong integration with Windows XP security.
- SQL Server reduces traffic on the user's Local Area or Wide Area Network by handling the processing of more requests and related functions on the server.
- SQL Server offers tight integration with Microsoft server operating systems, incorporating a variety of administrative tools for logging, messaging, and performance monitoring.

SQL Server does require that the user have an appropriate SQL Server license from Microsoft, and a database administrator familiar with managing SQL Server operations. (The standard RCAMS with the JET database engine requires no separate license from Microsoft; the user is licensed to use the JET run-time database distributed by Intersect through Intersect's run-time distribution license from Microsoft.)



Intersect has added a number of updates and enhancements to the standard RCAMS application in the past several months. These updates and enhancements are all included in the new RCAMS SQL version.

Some of these newest RCAMS features included in RCAMS SQL:

- Dynamic Label function: allows unique field names for indexed content entries for each database.
- Font and Font Size Selection options for optimum information display on newer LCD monitors.
- Label Masks: allow increased flexibility for specific data entries for various records contents categories.
- Global Editor: allows a single change — for instance, in a retention date, or a storage location — to be made in a single entry and applied to a large selection of containers.
- Image Manager 2006 updates — Intersect's integrated image indexing and management system for RCAMS, allowing indexing, display, and printing of a variety of electronic documents.
- Cursor position control for indexing of contents entries: can be set at beginning of existing text, end of existing text, or at a specified position within existing text, with character selection option.
- Accession, Accession Monitor, and RCAMS data indexing and mapping utility.
- Multiple databases: any number of separate records databases can be created and managed as appropriate. For example, electronic images can be indexed into the same RCAMS database system that manages traditional paper records and containers, or one or more separate RCAMS databases can be established for electronic records or other categories of records.

RSM and RCAMS SQL: A Comprehensive Records Management Suite

The new RCAMS SQL option extends the RSM / RCAMS system and comprehensive Image Management capabilities to the powerful SQL Server-based backend database for larger organizations with large records databases and large numbers of users.

The RSM / RCAMS SQL Records Management Software Suite incorporates the **Retention Schedule Manager (RSM)** application for creating and maintaining Records Control schedules using the Texas State Retention Schedules for State Agencies and Local Governments, and Clark's Encyclopedia of Records Retention, published in digital format by Intersect; the **RCAMS SQL** Records Control and Management System database application for management of records during their life using the records control schedule created; and the comprehensive **Intersect Image Management** system supporting indexing and management of electronic images within the RSM / RCAMS SQL system.

The **RCAMS Accession** and **RCAMS Accession Monitor** modules allow remote read-only access to a department's records inventory, and support remote on-line LAN or WAN records requests to a records center as well as a transmittal function for new records / containers being transferred to a records center.

The **RCAMS Image Access** module allows remote read-only LAN- or WAN-based access to a department's electronic records, supporting on-line viewing and printing of documents.

Now in its fourteenth year of developing software for records management applications, Intersect Systems Inc. is based in north Texas, in the Dallas-Fort Worth area. While much of Intersect's efforts focus on Texas Local Governments, the publication of *Clark's Encyclopedia of Records Retention* in digital format has expanded Intersect's customers to include organizations from California to Florida, and from south Texas to South Dakota. Intersect's installations range from very small towns to large Local Governments including some of the largest cities, counties, school districts, and community colleges in Texas, as well as medium and large universities and businesses including Fortune 500 companies.

For more information on RCAMS SQL and installation requirements, to request an on-site demonstration, or to schedule an update, contact Intersect at (972) 641-7747.

If you have any questions or need additional information, please contact Intersect Systems Inc.
at (972) 641-7747, or e-mail us at newintel@newintel.com.

For the latest news about Intersect software, current and recent issues of *The Intersection* newsletter,
and new announcements, visit the Intersect Systems web site at www.intersectsystems.com